

Product Map



Pressure Independent

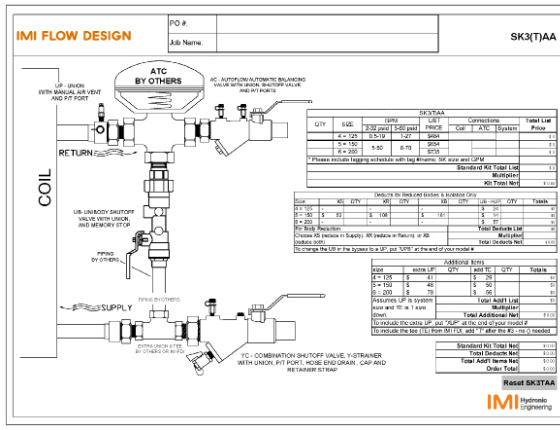


HARMONY VALVE
Size 1/2" - 6",
Max. 240 psi, @ 250°F
Steel venturi, flow measurement, shut-off and reducing inlet flange

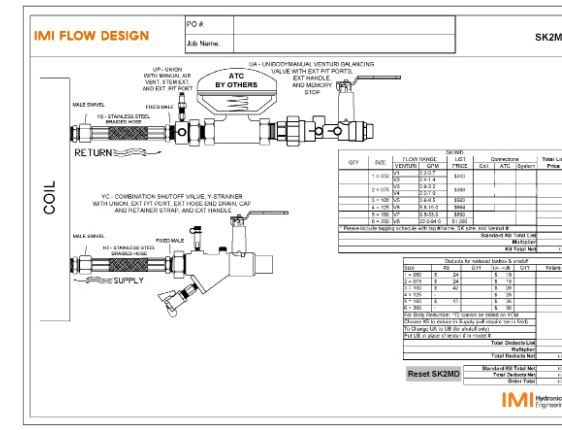
Control

IMI Flow Design Standard Kits

Pre-configured Automatic and Manual Coil Hook-up Kits



2-Way Automatic Hook-up



2-Way Manual Hook-up

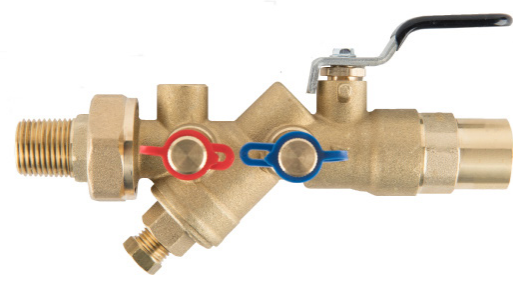
Ordering Instructions

Ordering Tools

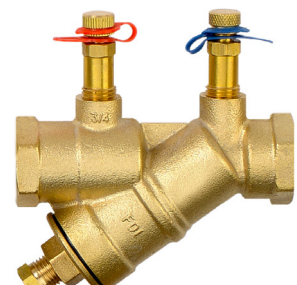
Automatic Balancing Valves



AC VALVE
Size 1/2" - 2",
Max. 400 psi, @ 250°F
Flow regulator, union and shut-off



ACR VALVE
Size 1/2", 3/4", 1", 1-1/2",
Max. 400 psi, 250 °F
Compact, flow regulator and shut-off



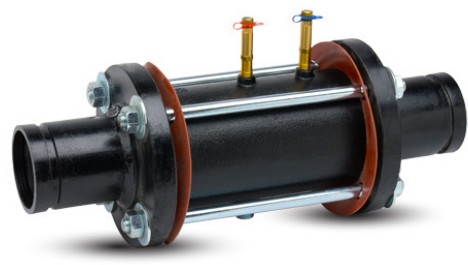
YR VALVE
Size 1/2" - 2",
Max. 400 psi, 250 °F
Flow regulator



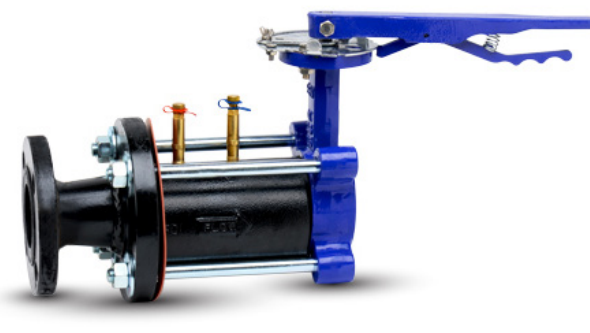
WB VALVE
Size 2-1/2" - 8",
Max. 225 psi, 250 °F
Flow regulator and shut-off



WS VALVE
Size 2-1/2" - 30",
Max. 600 psi, 250 °F
Wafer style regulator (2-1/2" shown)



WG VALVE
Size 2-1/2" - 14",
Max. 225 psi, @ 250°F
Grooved flow regulator

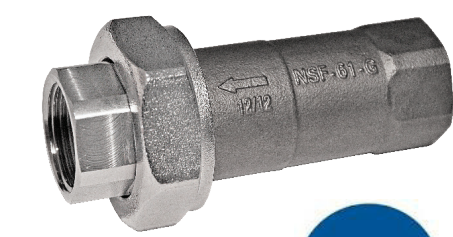


WR VALVE
Size 3" - 5",
Max. 225 psi, 250 °F
Flow regulator, shut-off and flanged reducer



WT VALVE
Size 2-1/2" - 3",
Max. 200 psi, 250 °F
Flow regulator, shut-off and dielectric nipple (Designed to attach directly to brass-body threaded ATC)

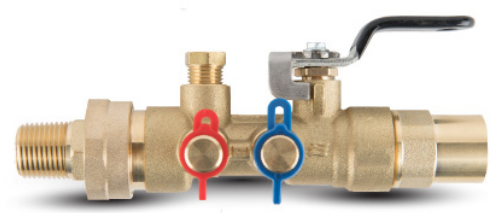
Balancing Valve for Potable Water



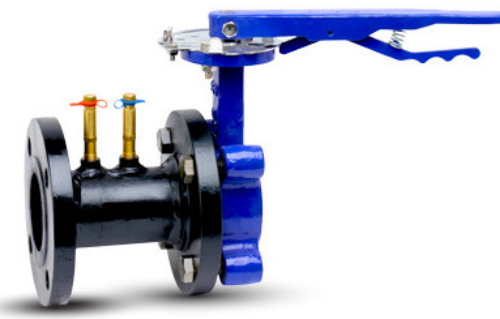
ICSS
Size 1/2" - 3/4", Max. 400 psi,
180 °F, Flow range 0.3-12 gpm
Inline Flow Controller, NSF/ANSI
61 G certified for commercial hot
applications (potable water)

Balancing Valves

Manual Balancing Valves



UA VALVE
Size 1/2" - 2",
Max. 600 psi, @ 250°F
Balancing, union, shut-off and optional port



AF VALVE
Size 4" - 16",
Max. 240 psi, 250 °F
Flanged steel venturi, flow measurement and shut-off



AG VALVE
Size 4" - 16",
Max. 240 psi, 250 °F
Flanged venturi, flow measurement and shut-off



ET VALVE
Size 2-1/2" - 4",
Max. 240 psi, 250 °F
Steel venturi, flow measurement, shut-off, dielectric nipple and extended inlet (five pipe diameter)



VF VALVE
Size 2" - 16",
Max. 240 psi, 250 °F
Flanged steel venturi and flow measurement



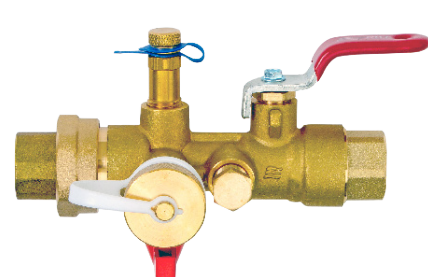
VG VALVE
Size 2" - 16",
Max. 400 psi, 250 °F
Grooved steel venturi and flow measurement

Lead-Free Balancing Valve

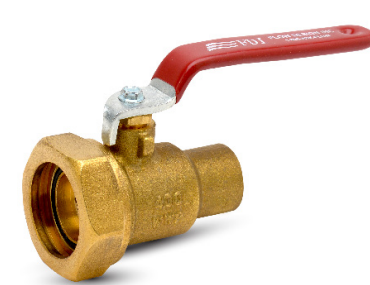


UA ZERO VALVE
Size 1/2" - 2",
Max. 600 psi, @ 250°F
Balancing, measuring and isolation

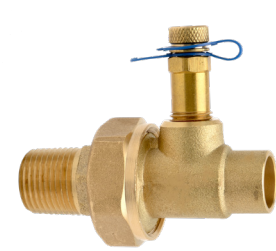
Brass / Steel Hook-up Valves



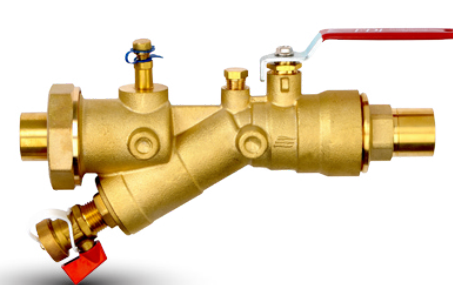
UB VALVE
Size 1/2" - 2",
Max. 600 psi, @ 250°F
Shut-off, optional unions and multiple accessory ports (Shown with optional accessories)



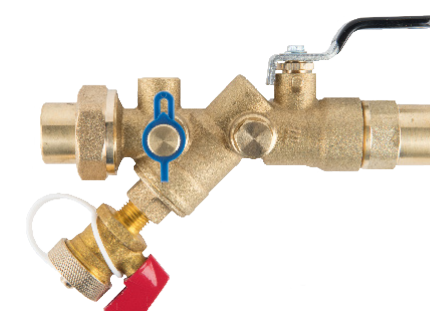
UBM VALVE
Size 1/2" - 3/4",
Max. 600 psi, @ 250°F
Compact shut-off



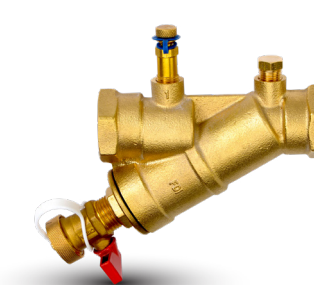
UP VALVE
Size 1/2" - 2-1/2",
Max. 400 psi, @ 250°F
Union and port sections (Shown with optional pressure/temperature port)



YC VALVE
Size 1/2" - 2",
Max. 400 psi, @ 250°F
Union, y-strainer, shut-off, and multiple ports (Shown with optional accessories)



YGR VALVE
Size 1/2", 3/4", 1", 1-1/2",
Max. 400 psi, @ 250°F
Union, y-strainer, shut-off, and multiple ports (Shown with optional accessories)



YW VALVE
Size 1/2" - 2-1/2",
Max. 400 psi, @ 250°F
Y-strainer with port sections (Shown with optional accessories)



FA VALVE
Size 2" - 8",
150# ANSI
Accessory flange, multiple port sizes (1/4", 1/2" & 3/4")

Hook-up Components



FG VALVE
Size 2" - 8",
150# ANSI
Grooved accessory flange, multiple port sizes (1/4", 1/2" & 3/4")

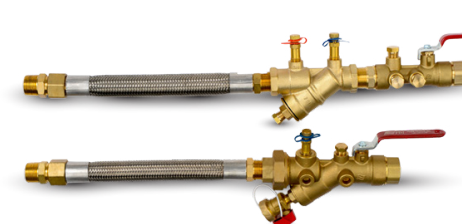


CW VALVE
Size 2-1/2" - 8",
Max. 125 psi, @ 250°F
Strainer

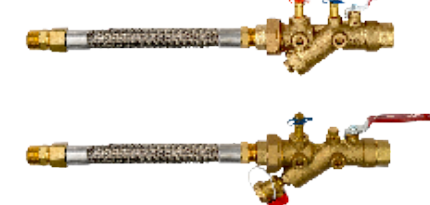


CY VALVE
Size 2-1/2" - 8",
Strainer, drain valve and shut-off
CW - Max. 125 psi, @ 250°F
BF - Max. 240 psi, @ 250°F

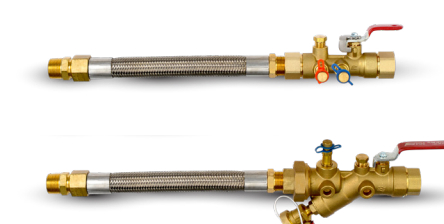
Hose Kits



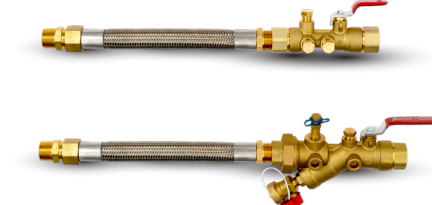
KIT A
Size 1/2" - 2",
Flow regulator, Shut-off, optional union, hoses and multiple accessory ports (Shown with optional accessories)



KIT AC
Size 1/2" - 2",
Flow regulator, Union, Shut-off, hoses and multiple accessory ports (Shown with optional accessories)



KIT B
Size 1/2" - 2",
Venturi, Shut-off, union, hoses and multiple accessory ports (Shown with optional accessories)



KIT C
Size 1/2" - 2",
Shut-off, union, hoses and multiple accessory ports (Shown with optional accessories)